

# **DIGIT NT 'Posit'**

## **Electronic Panelsaw.**

### **LEADING BY DESIGN**

This report demonstrates what sets a Casolin above other Panel saws. Design with high levels of technology and innovation to deliver real advantages where it counts – out on your Workshop floor.



### **A BETTER CONCEPT**

The POSIT NT is Casolin's premium saw, built without compromise.

Big design advantages, like the vertical sliding table, combine with many small touches to meet the demands of the most advanced users.

Significant time savings and elimination of errors are achieved with powered and programmable settings, working at high speed, with complete precision.

1150 kg 'rock solid' construction ensures you enjoy these benefits for many years.

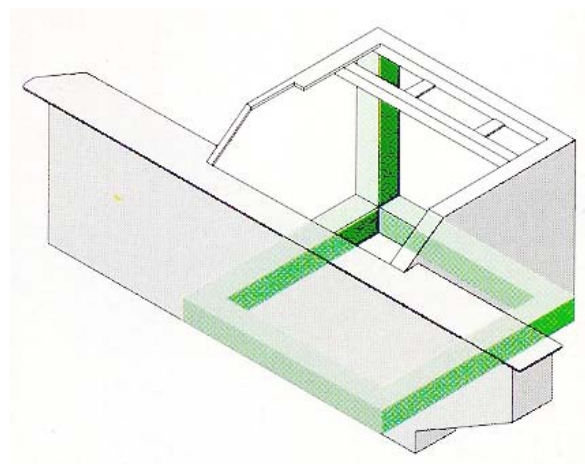
## **DESIGN IN DETAIL**

### **STRONGER FRAME**

One-piece, built of 4mm and 8mm steel plate with 'U' section corners. Full box sections in the floor area and underneath the fixed table, combined with heavy steel plate along the top of the frame to provide a very stable, solid platform.

What really sets Casolin's frame apart is the innovative cement injection into the base. Unlike cement pads, Casolin's design lowers the centre of gravity for heavy sheet cutting while adding extra rigidity to the entire frame. Resonance vibration that occurs in frames without this 'all 4 sides' system is eliminated.

Four large levelling screws make setup easy.



A 600 x 620mm door gives easy access. An electrical circuit breaker to ensure there's no danger of the machine being started or the rise and fall or tilt activated when changing the blade speed. The open design allows dust to fall directly to the floor where it is easily blown clear.

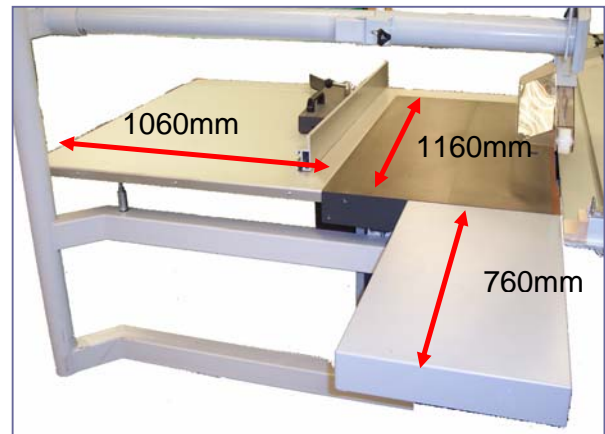
All electrical and electronics controls are housed separately behind a locked door, dust protected with rubber seals. The padlockable safety switch must be 'off' before opening the electrical cabinet.

## LARGER TABLES

The main table is 10mm thick cast iron and larger than normal at 1160 deep x 675mm. It is precision ground absolutely flat with 90mm deep sidewalls and very heavy grid pattern bracing 'cast in' underneath.

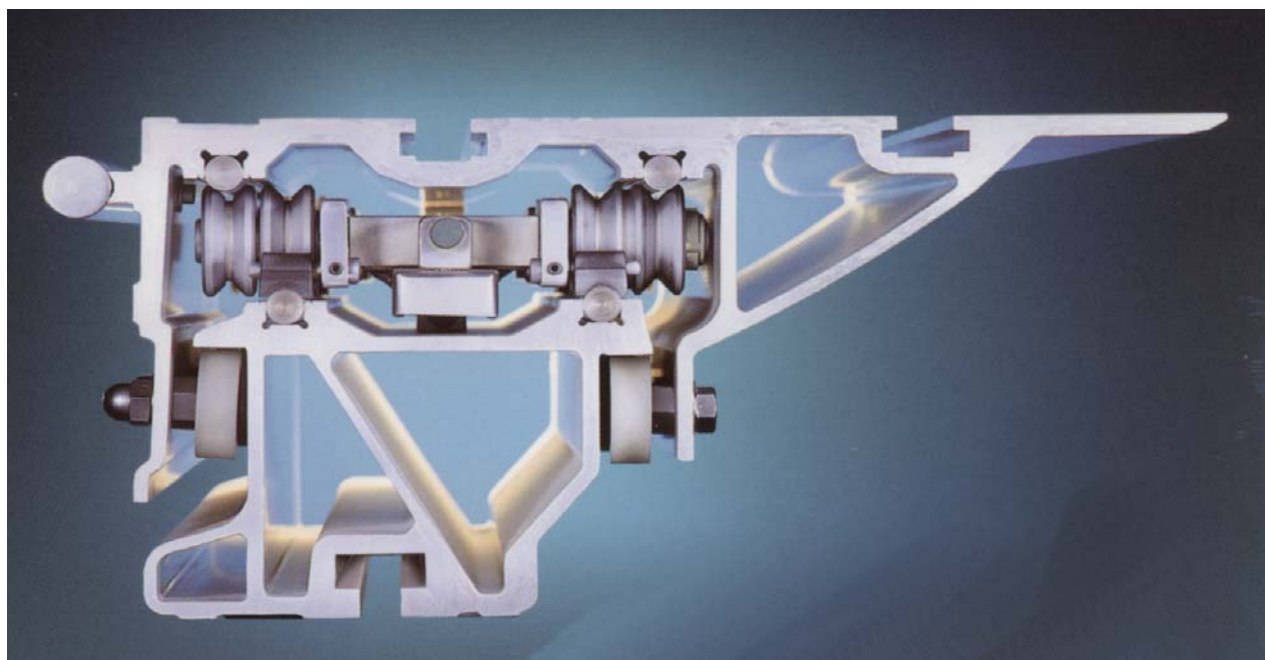
Laminated inserts form a close fit around the blades for extraction efficiency and safety

A huge and heavily braced 1160mm x 1060mm aluminium side table and 760mm deep rear table ensure even large panels are fully supported.



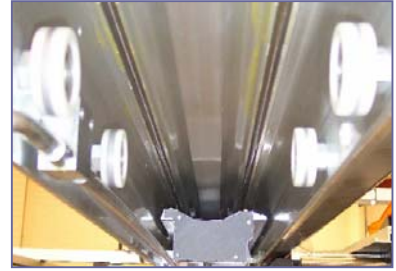
## THE BEST SLIDING TABLE

Casolin's patented sliding table is exceptional. This vertical system works with gravity transferring weight directly downward. This ensures it's free of play and automatically takes up any eventual wear in the guide-ways. ( With horizontal systems - wear is immediately evident in reduced straight-line accuracy and deterioration of cut quality.)



Twelve 42mm diameter sub rollers lock the sliding and fixed tables together. Clever design provides maximum stability in the cutting area with less pressure before and after.

This results in a perfect cut yet a very free-running table.



Casolin use separate rollers for the top and bottom rails. Using 4 rollers halves wear and load compared to 2 roller systems. They run along 14mm hardened steel rails

- well proven for superior long-term performance.

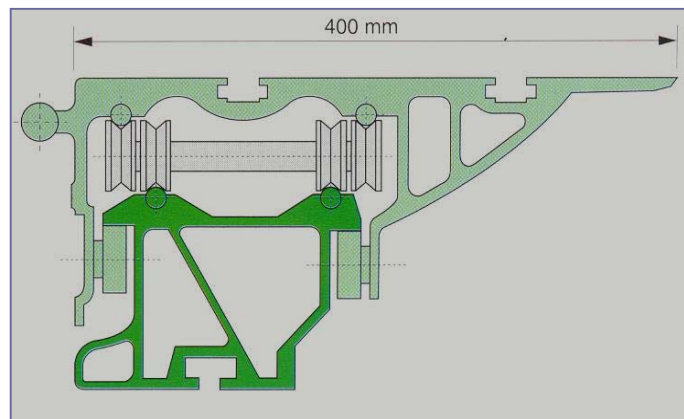


Casolin's system sets the benchmark with accuracy guaranteed at +/- .025mm per metre of travel.

The 1160mm spacing between the two sets of rollers enhances this accuracy. Compared to the 600 -700mm of ball carriages common in horizontal systems and Casolin's superior resistance to sideways twisting is clear. Nylon scrapers and brushes sweep the rails clean with every cut.

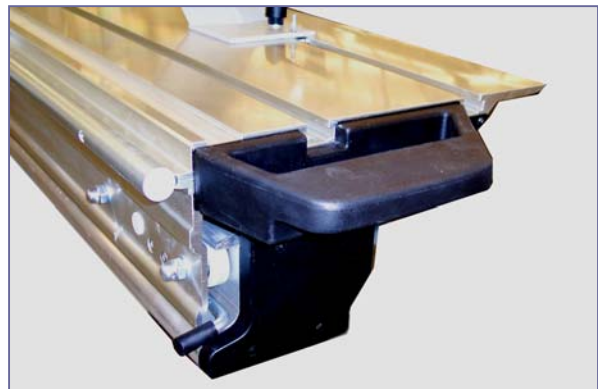
## THICKER EXTRUSIONS

The sliding table extrusions are exceptionally strong. 24mm thick in the rail housing area, 12 and 10mm across the top with 6mm vertical bracing. These are around twice the thickness other use. The 140mm deep sidewalls complete the unmatched rigidity of this extrusion and consequent accuracy.



The carriage locks easily and reliably in 3 convenient positions via a solid 'flip bar' at the front.

A sturdy but comfortable soft rubber pull handle and a 'bum bar' allows easy hands free repositioning of the table ready for the next cut.



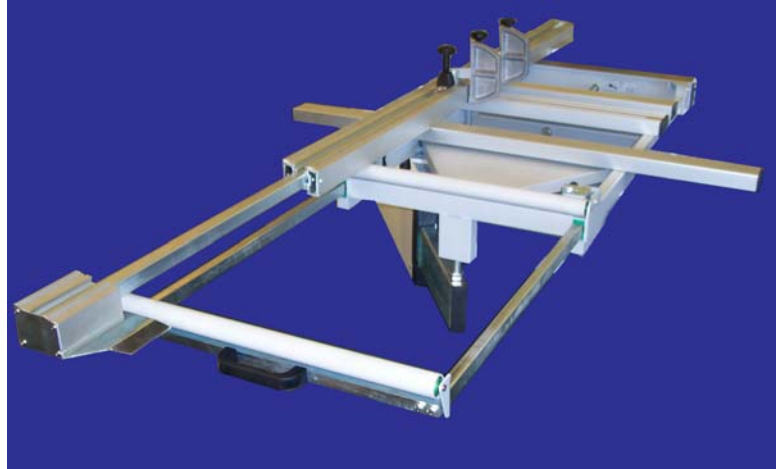


## LARGER STRONGER CROSSCUT SUPPORT

The crosscut table is a rock solid 1300 x 600mm platform for the largest sheets. Built of box section steel with triangular bracing, it can be repositioned anywhere along the sliding table. The rubber coated rollers make 'one man' panel loading without scratching easy.

This roller also telescopes out 760mm. This increases the 'blade to support roller' distance to a massive 2460mm

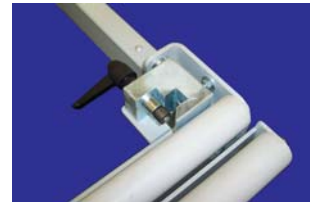
The 1250mm long rail positions where you need it to support your sheets. Typical of Casolin's attention to detail these rails have no channels to catch panel edges and are dust sealed.



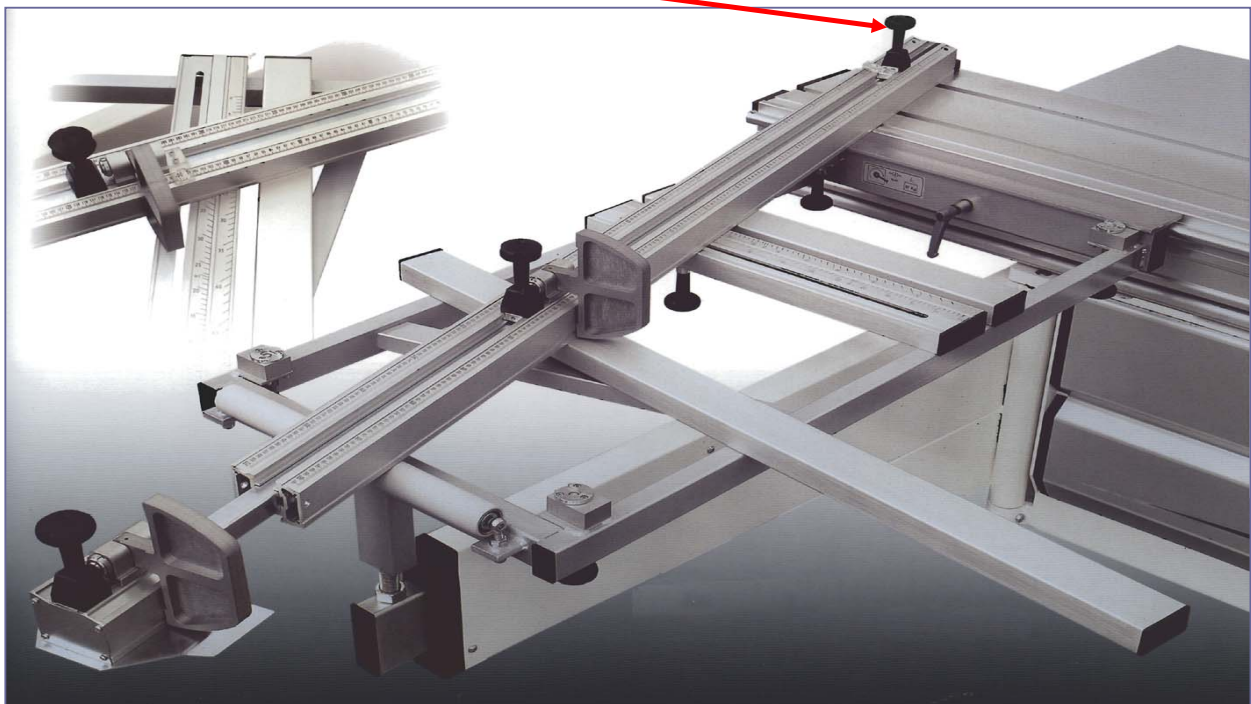
## CLEVER CROSSCUT FENCE

A quick release system lets you remove or reposition the entire fence in seconds and it extends out to 3700mm.

The fence is angled towards your operating position – much easier to see and set the stop positions 100% 'spot on'. You move the extension stop and read its position from here at the front of the table.



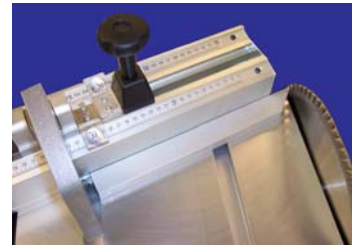
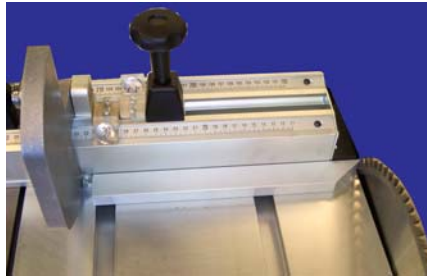
No need to walk along to where the stop is. Clever!



## MITRES ARE SO EASY

The huge crosscut fence is also your Mitre fence – so even the biggest work is easily and accurately mitred. No time wasted fitting a separate fence. There's a clever fence sliding system that compensates for the offset from

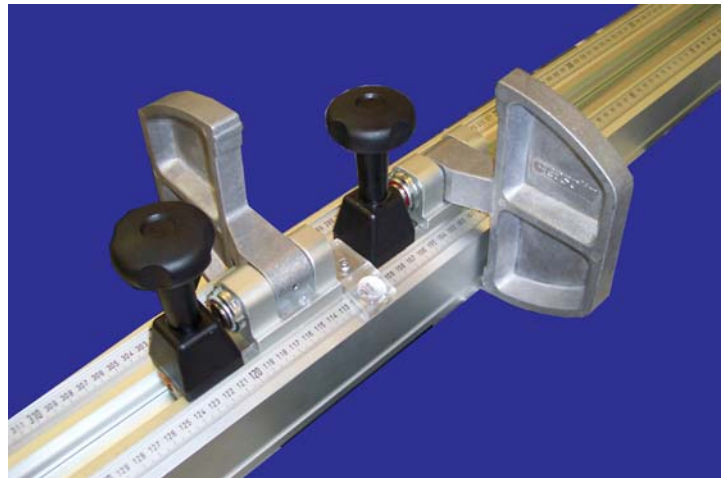
the blade as you set a mitre. Use the gauge supplied to reposition the fence so that your scale always reads true, regardless of the mitre angle. The gauge is even magnetised – for easy storage on the machine frame.



## ROCK SOLID STOPS

18mm thick with 'easy slide' bases that make repositioning the stops simple with no 'creep' as you tighten them.

'Flip over' design allows you to use the stops either side of the fence without having to rotate them. Curved bases let your panel slide under any stop not being used.

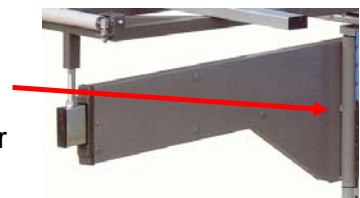


A great feature is the magnification readout with a line underneath and cross hair on top. Line these up and you know its 100% accurate. You look down onto clear, one-piece steel tape recessed to avoid scratching. The tape is easily repositioned to recalibrate for a change in saw blade thickness

## SUPPORT FROM THE 'SWINGING ARM'

A crosscut table is only as good as the swinging arm supporting it. Casolin swinging arm has a 600mm axle up the entire length of the frame rather than the 'half axle' commonly used. It's 25mm diameter and mounted in adjustable bearings, encased in 6mm steel tube welded to the frame with 25mm steel plates. It's strong!

The vertical guide rollers are 50mm diameter by 40mm wide. Again stability is the keynote. The guide rail is 120 x 40mm box section to avoid any flexing under heavy loads.



## EASY CONTROL PANEL

The 'hanging' control panel swivels to suit the operators preferred working position. Everything's at 'eye level' and at your fingertips. The 250 program memory and 'self learning' function means you always have the cutting program you need ready for instant recall.

( Or just 'punch in' a new setting and 'go')

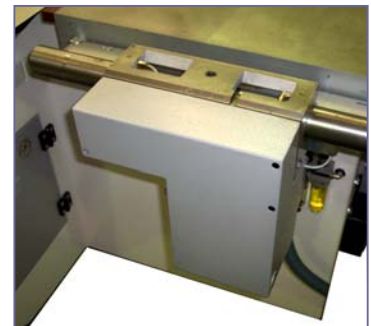
Large 'bright red' readouts clearly show the fence position and tilt setting. To set a new tilt angle or blade height simply turn the switch with 'fast' and 'slow' positions for hairline settings.



## BETTER 'RIP' POSITIONING

The rip fence moves to a new position rapidly and with deadly accuracy on a high precision drive. Changes in the distance from blade to fence when tilting are automatically compensated for. There's no chance of the fence being knocked out of position either. Automatic pneumatic lock/unlock guarantee that.

Top end electronic components like Siemens are used to ensure the fastest reaction times, higher accuracy with reliability over time. A fence is only as good as its mounting and with Casolin this is a very solid one piece cast iron unit 550mm deep by 300mm wide travelling along a 50mm dia. precision ground round bar. When cutting panels wider than the rip capacity the upper support and fence removes in seconds to give you an unobstructed support surface. Dovetail guides means it always repositions 'spot on'



## SELF LUBRICATING

Here's another great feature. Casolin's patented self lubricating rip fence Guide way means your fence travel is always silky smooth – without you doing anything.

## AND A BETTER FENCE

1200mm long, 100mm high, heavily ribbed anodised aluminium, the fence easily rotated 90 degrees to give a lowered fence height.

This is useful when cutting thin material or doing narrow bevel cuts. A quick release allows you to reposition it forward when cutting springy material avoiding 'back cutting.'



## SIMPLE, PRECISE SCORER SETTING

Most people know the frustration of hard to set scorers. You can forget about that with Casolin. The external scorer adjustments are on fine threads. These directly and separately adjust the height and sideways position without complicated cams, levers or wires to cause inaccuracy or sloppy 'feel'. They are positioned for 'line of sight' setting.



Once set collar locks guarantee the setting is maintained.

## CONVENIENT OVERHEAD GUARD

Casolin's new guard shows typical Italian design flair without compromising its simple function. Clear sides let you see the cut. Rollers front and rear automatically raise the guard to match your panel height for extraction efficiency.

The entire overhead quickly swings clear of the cutting line when working with tall work. You extract from the top and bottom of the blade for the cleanest possible result. Extraction from the saw base is channelled directly to the rear of the frame ensuring excellent extraction efficiency – only 1100 cubic metres per hour of airflow required.



## CHANGING BLADES AND BLADE SPEEDS

A large well-balanced lever extends to the door. Flip it left to release the drive belt. This is automatically re-tensioned when you flip the lever back. The scorer's long flat belt eliminates vibration transfer from motor to blade. It includes auto belt tensioning

When changing blades the saw shaft is locked through the table top using a simple T bar. A steel cover folds down for unobstructed blade access while a safety interlock renders the machine inoperable.

Top quality TCT main blade and 2 piece scorer blades are supplied. Also supplied are 3 riving knives to suit 300, 350 and 400mm blades. Riving knife adjustment couldn't be easier.

Saw collars are 110mm and 10mm thick, ensuring your blades are well supported and the collars not distorted easily by over tightening.

SAW UNIT FROM 'POSTFORMING' VERSION  
SHOWN HERE

## CAST IRON SAW GROUP

The design of the saw-group is another big plus for Casolin. Its heart is a heavily ribbed one-piece 800mm by 380mm cast iron unit with a separate rise and fall casting 500mm x 300mm. The ribs in these are 25mm thick!

To support the tilt quadrants it forms into a wide 'T' section front and rear, 25mm thick. The tilt trunnions are 220mm - around 60% larger than commonly used. Large trunnions mean accuracy. Interlocking Z sections guarantee highest precision.

Tilting and rise and fall are by large capacity drives. Tilting to 45° takes 20 seconds while the blade can be fully raised in under 7 seconds. The saw shaft dia. is 50mm, not the 30mm others use.

## OTHER FEATURES YOU WILL APPRECIATE

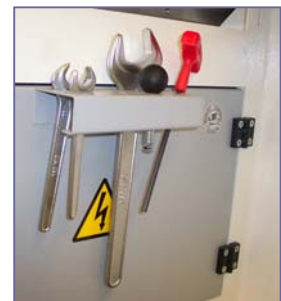
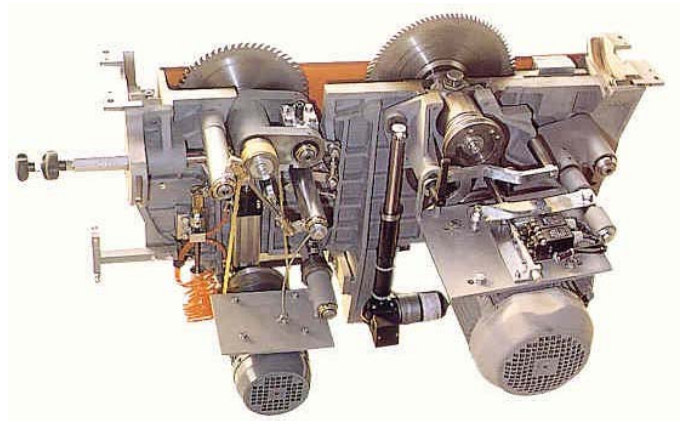
Auto 'star delta' start and auto motor brake add safety and convenience.

The sliding table has adjustment for 'free cut'. In fact all adjustments you need for perfect cutting are built into your new Casolin.

Operating noise is below the tough European 'CE' regulations.

You will appreciate this every-time you use the machine.

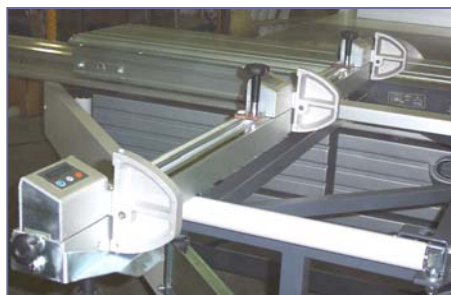
A handy rack is provided for storing blade spanners and other tools provided on the machine.



## CLEVER OPTIONS

Digital crosscut stop readouts, mitre fences, 'shimless' Scorer systems and other specialised options are in the brochure.

## Leading by Design



[www.jacks.co.nz](http://www.jacks.co.nz)  
[sales@jacks.co.nz](mailto:sales@jacks.co.nz)

